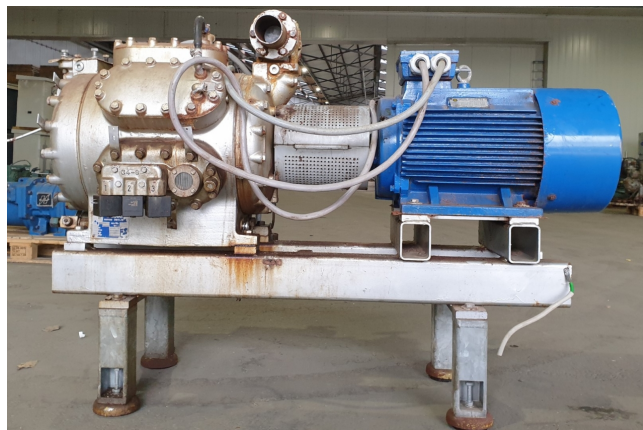


# Sabroe CMO 26

## Specifications

Brand	Sabroe
Type	CMO 26
Refrigerant	NH 3 (ammonia)
kW at +10°C/+40°C	175,4
kW at 0°C/+40°C	114,6
kW at -5°C/+40°C	90,5
kW at -10°C/+40°C	70,2
On steel base frame	✓
Sight Glass	✓
m3 / h	142,0
Sizes	1750x680x1120 mm (LxWxH)
Stock	1



## Description

### Used Sabroe CMO 26

Used Sabroe CMO 26 reciprocating compressor on NH3. Complete with a Hoyer Motors Y2E2/180L1-4 electromotor: 50/60 Hz - 30 /36 kW - 1470/1750 RPM.

\*Why choose for HOSBV? Were not only the largest used refrigeration specialist in Europe, but also, we deliver all equipment including an extensive test, warranty and industrial cleaning.

\*Optional we can also arrange the logistics.

